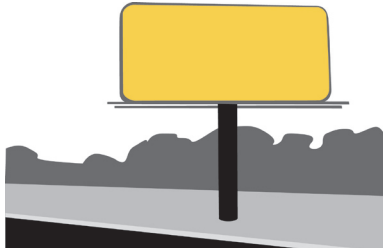


## PREPRESS SPECS

*specifications for file set up*

### POSTER (*Paper or Eco-flex*)



### SIZING FILE CORRECTLY

We use a 1/2 in. scale (*compare “actual sizes” with “file sizes”*) with a safety border included. Set your file up to the “FILE SIZE” listed and adhere to the color mode, resolution and accepted file types listed below. Please contact an Adams Art Director with any questions.

#### SPECS FOR POSTER FILES

##### ACTUAL SIZE:

10'5" x 22' 4"

##### FILE SIZES:

5.208" x 11.166"

##### COLOR MODE:

CMYK

##### RESOLUTION:

300 DPI

##### ACCEPTED FILES:

JPEG  
\*TIFF  
PSD  
PDF  
EPS  
AI

\*for final art, we prefer flattened files.

##### IMPORTANT TO NOTE:

The “safety border” mentioned above is a .25" area on all sides of the file. All background material should fill to the edge. All important information should not be placed within the .25" safety border.

Please contact your local Adams Art Director with any questions.

## ECO-FLEX PRODUCTION SPECS

*specifications for finishing/printing*

#### (If not using Adams for Eco-Flex production/printing):

If you choose to produce your Eco-flex poster through an alternate production house than one used by ADAMS, please make sure to provide them with the following information:

- They are to be produced with Formetco Finishing
- They are to use 3.2 oz P/E vinyl
- The finished hem size is: 10' 5" x 22' 8" (no bleed, no pocket)